

THE SILVERSTEIN FLAP AND SUTURE CLOSURE KIT

This specialized Flap and Suture Closure Kit provides precision instruments specifically designed for today's minimally invasive soft tissue procedures. Surgical applications include soft tissue augmentation, root coverage, vestibular extension, suture removal, and stabilization of mobile marginal tissue.

INSTRUMENT KIT LIST

PART CODE	DESCRIPTION
IM4169	Sig. Series Cassette (16), Green
ASPB3	B3 Byrd Self-Cleaning Aspirator
MH6 (2)	#6 Satin Steel® Mirror Handle
MIR5	#5 Front Surface Mouth Mirror
MIR5DS	#5 Double-Sided Mouth Mirror
10-130-03	#3 Scalpel Handle
PCPUNC156	UNC Color Coded Single Ended Probe, #6 Handle
DPU17	U17 Utility Pick-Up Dressing Plier
TP43	43 7x7 Adson-Brown Tissue Pliers, 12cm/4.75"
RMF	Mini Friedman Ronguers
S16SC	Goldman-Fox Super-Cut Scissors, 12.5cm/5"
NH5038	Crile-Wood Needle Holder, 15cm/6"
SYRCW	Type CW Winged Aspirating Anesthetic Syringe
SCK66	CK-6 Crane-Kaplan Scaler, #6 Handle
KK15/166	15/16 Kirkland Periodontal Knife, #6 Handle
KO1/26	1/2 Orban Periodontal Knife, #6 Handle
PFIWDS16	1 Woodson Plastic Filling/Periosteal Elevator, #6 Handle
PPR36	3 Prichard Periosteal Elevator, #6 Handle
SG11/126	11/12 Gracey Curette, #6 Handle
SG13/146	13/14 Gracey Curette, #6 Handle
SPR1/26	PR1/2 Prichard Periodontal Surg. Curette, #6 Handle
S13K/TG6	13K/TG Kirkland Periodontal Chisel, #6 Handle
FS9/10S6	9/10 Schluger Curved Periodontal File, #6 Handle
PSN392V	4-0 PGA, Violet 18" C-6 3/8 Circle
PSN723V	5-0 PGA, Undyed 18" C-19 1/2 Circle
IM1000 (2)	Hinged Instrument Clips, 2 Per Package



DR. LEE SILVERSTEIN, DDS, MS, FACD, FICD



Dr. Silverstein is an Associate Clinical Professor of Periodontics at the Medical College of Georgia in Augusta, GA, lecturing both nationally and internationally on the topics of periodontal plastic surgery, implantology, tissue regenerative surgical techniques, and oral medicine. Dr. Silverstein has contributed extensively to the academic literature in his area of expertise, authoring in eight text book chapters, published in journals, as well as the highly acclaimed textbooks *Principals of Dental Suturing: A Complete Guide to Surgical Closure* and *Principles of Soft Tissue Surgery: A Complete Step-by-Step Procedural Guide*. Dr. Silverstein is privileged to be on the contributing editorial boards of *The Academy of General Dentistry Scientific Magazine*, *Collaborative Dental Techniques*, *Dentistry Today*, *Functional Esthetics and Restorative Dentistry*, *Inside Dentistry*, and *Practical Periodontics and Aesthetic Dentistry* and has been granted Fellowships in the Pierre Fauchard Academy, the American College of Dentists, the International College of Dentists, and the American Academy of Implant Dentistry. Dr. Silverstein continues to practice in Marietta, GA.

Hu-Friedy

FLAP AND SUTURE CLOSURE PROCEDURE



GINGIVECTOMY

Instrument: Kirkland Knife (KK15/166)

The Kirkland Knife, is used for performing gingivectomy type incisions and for performing distal wedge type procedures distal to the terminal tooth.



TRIMMING BARRIER

Instrument: Goldman-Fox Scissors (S16SC)

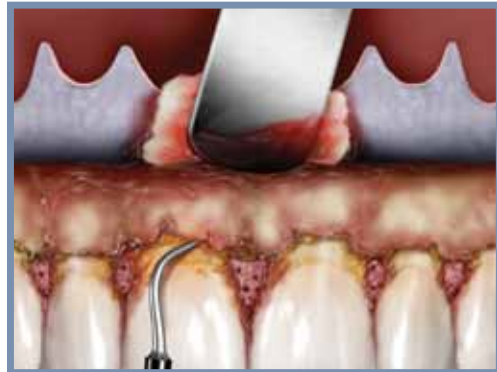
Goldman-Fox Scissors, are used to trim barriers, tissue, and granulation tissue on the underside of flaps or cut suture thread during surgery.



ATRAUMATIC FLAP RETRACTION

Instrument: Adson-Brown Tissue Pliers (TP43)

Adson-Brown Tissue Pliers are used specifically to handle surgical flaps with tactile feel atraumatically.



REFLECTION OF FULL THICKNESS FLAP

Instrument: Prichard Periosteal Elevator (PPR36)

The Prichard Periosteal Elevator is used to atraumatically retract surgical flaps, protect the underside of surgical flaps, and reflect light similar to a mouth mirror.



SHARP DISSECTION

Instrument: Orban Knife (K01/26)

The Orban Knife does not cut on the top or bottom of the instrument so it can be used to undermine soft tissue during tunneling procedures or to remove collars of tissue.



SUTURE PLACEMENT

Instrument: Needle Holder (NH5038)

A precision needle holder with tungsten carbide inserts is used to precisely hold a suture needle without causing damage to the cutting edge of the suture needle.

FLAP AND SUTURE CLOSURE KIT



IMS-4169
Sig. Series Cassette (16), Green

Large Cassette for 16 Instruments plus additional space for accessories. Dimensions 8" x 11" x 1.25"



ASP B3
B3 Byrd Self-Cleaning Aspirator

Used for precision suction at the surgical site.



MIR5
5 Front Surface Mouth Mirror

Mirror with large diameter ergonomic handle for cheek and tongue retraction.



MIR5DS
#5 Double-Sided Mouth Mirror

Used for retraction and increased lighting to the procedural site.



MH6 (2)
6 Satin Steel Mirror Handle

10-130-03
#3 Scalpel Handle

Balanced scalpel blade handle to easily maneuver in difficult-to-reach areas.



PCPUNC156
UNC Color-Coded Single Ended Probe, #6 Handle

Universal probe with 1mm increments.



DPU17
U17 Utility Pick-Up Dressing Plier

Utilized for picking up surgical sponges, holding suture thread for surgical knots, and placing grafts into recipient sites.



TP43
43 7x7 Adson-Brown Tissue Pliers, 12cm/4.75"

Used to handle surgical flaps delicately.



RMF
Mini Friedman Ronguers

Used for the removal of granulated tissue, harvest tuberosity bone and removing bony spicules.



S16SC
Goldman-Fox Super-Cut Scissors, 12.5cm/5"

Used for the removal of granulated tissue from the underside of the interdental papilla and surgical flaps.



NH5038
Crile-Wood Needle Holder, 15cm/6"

Featuring carbide inserts, the needle holder is used to firmly hold the suture needle without damaging the needle edges.



SYRCW
Type CW Anesthetic Aspirating Syringe, Winged

Used for the delivery of local anesthetics.



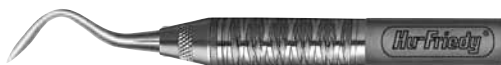
SCK66
CK-6 Crane-Kaplan Scaler, #6 Handle

Degranulation of interdental tissue during osseous surgery and removes heavy calculus deposits.



KK15/166
15/16 Kirkland Periodontal Knife, #6 Handle

Provides access to distal surfaces of terminal molars and used for gingivectomy incisions.



KO1/26
1/2 Orban Periodontal Knife, #6 Handle

Intended to make incisions around the terminal molars and to tunnel recipient sites for soft tissue grafts.



PFIWDS16
1 Woodson Plastic Filling/Periosteal Elevator, #6 Handle

Used to reflect delicate mucogingival tissues or as a periosteal elevator to luxate anterior teeth. The opposite end can be used to place bone grafting material in appropriate procedures.



PPR36
3 Prichard Periosteal Elevator, #6 Handle

May be used as a mirror as well as for tissue retraction.



SG11/126
11/12 Gracey Curette, #6 Handle

Angulated to reach mesial surfaces of posterior teeth.



SG13/146
13/14 Gracey Curette, #6 Handle

Angulated to reach distal surfaces of posterior teeth.



SPR1/26
PR1/2 Prichard Periodontal Surg. Curette, #6 Handle

Used for the removal of tissue and tenacious deposits.



S13K/TG6
13K/TG Kirkland Periodontal Chisel, #6 Handle

Used for odontoplasty with prominent roots needing to be modified during periodontal plastic surgeries.



FS9/10S6
9/10 Schluger Curved Periodontal File, #6 Handle

Used for interdental alveoloplasty during osseous, crown-lengthening, dental implant and tori-removal surgeries.

Call 1-800-Hu-Friedy or visit Hu-Friedy.com for more information.

©2009 Hu-Friedy Mfg. Co., Inc. All rights reserved. Hu-Friedy, the Hu-Friedy oval logo, IMS and Perma Sharp Signature Series are trademarks of Hu-Friedy Mfg. Co., Inc.

